

PRELIMINARY SECURITY CHECKS
This flow is consistent for most processes

Project_Exist
Prj_Projects, Prj_Status
for cod_Project=(p)

Select * from SCR_Security where Project_instance = (p)

Select * from USR_Security where Cod_User = (u)

ref: DrwReqNew 2005.06.07 lines 1-5

520 records pulled on a small data set - inefficient (should request 1 record)

Project Exist?

No

Projects_Errors.asp
Error: 504
Process: idrn

Process is new to error handling because Error numbers were replicated in many places (no indication what process generated it - address bar now holds clue to process).

Yes

Project Permissions
Objects 100 and 101
(Results in binary)

ref: DrwReqNew 2005.06.07 Line 1

Permission greater than 15?

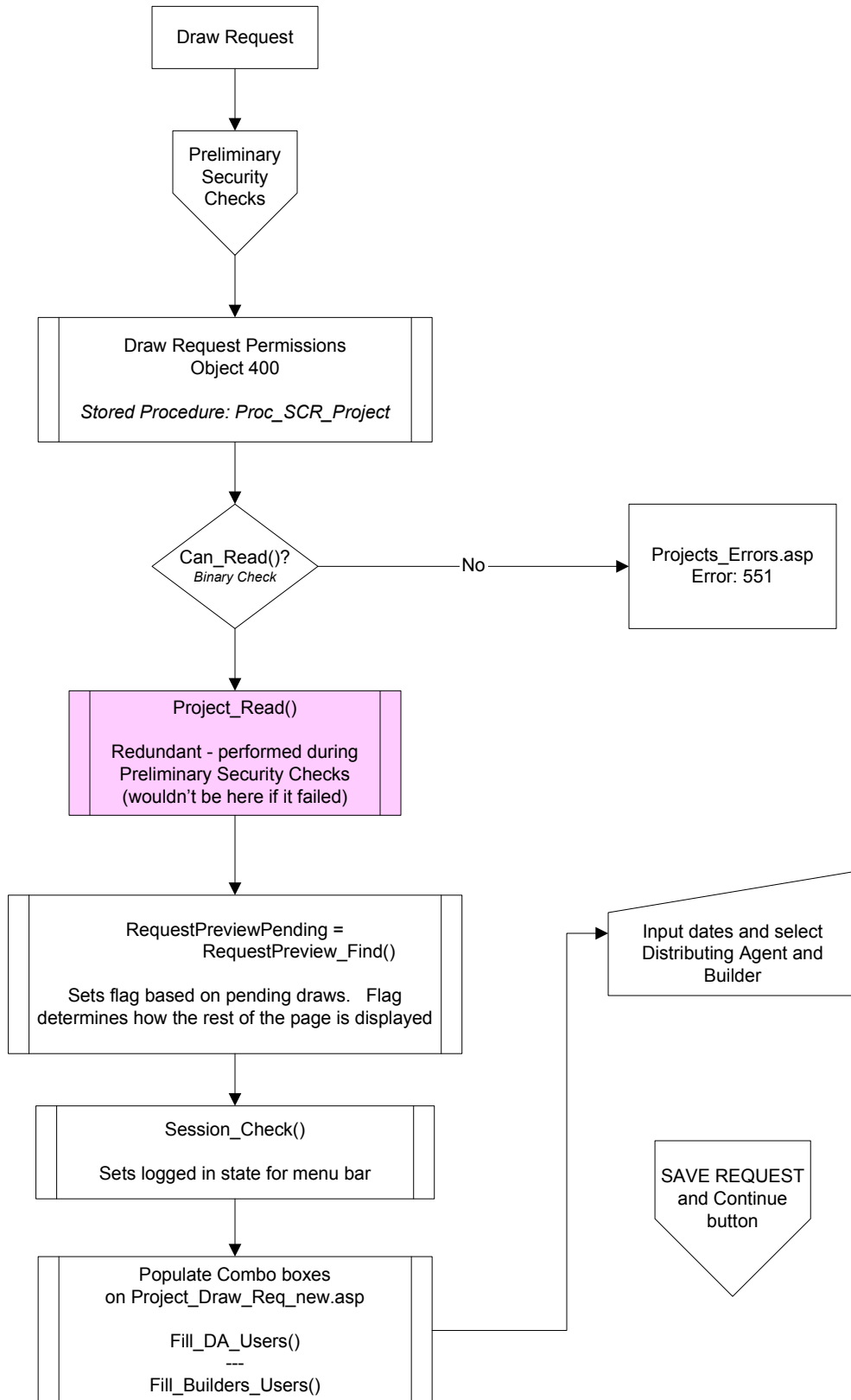
Yes

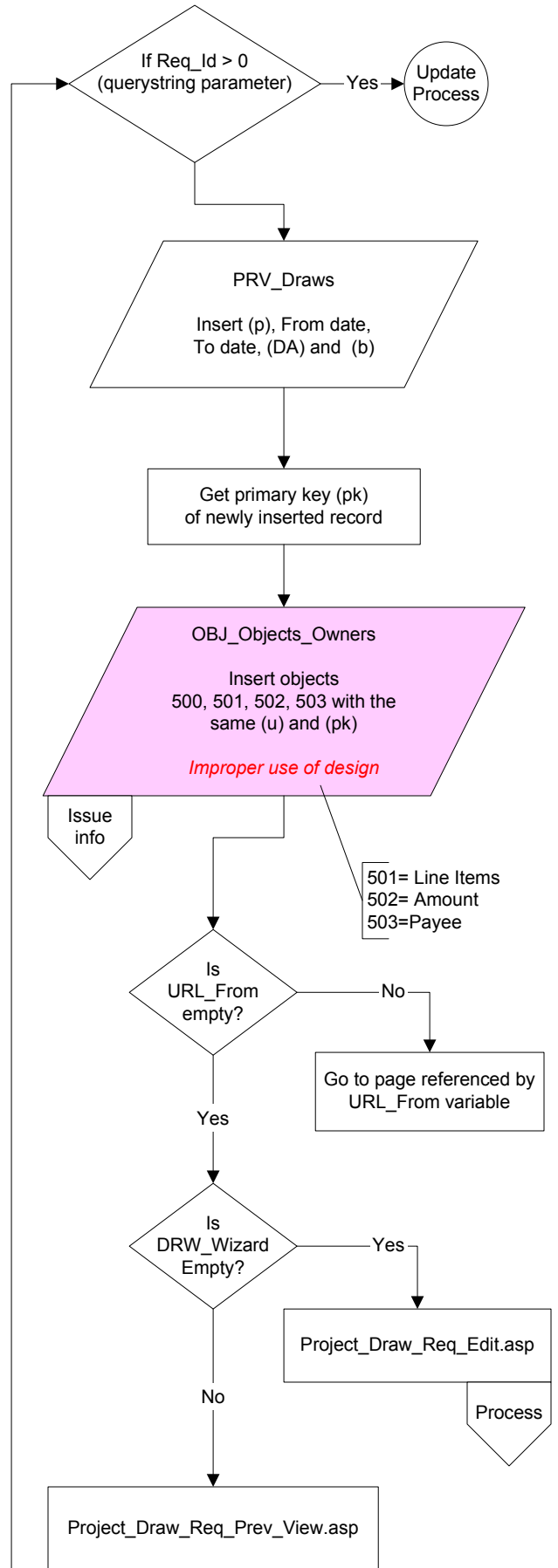
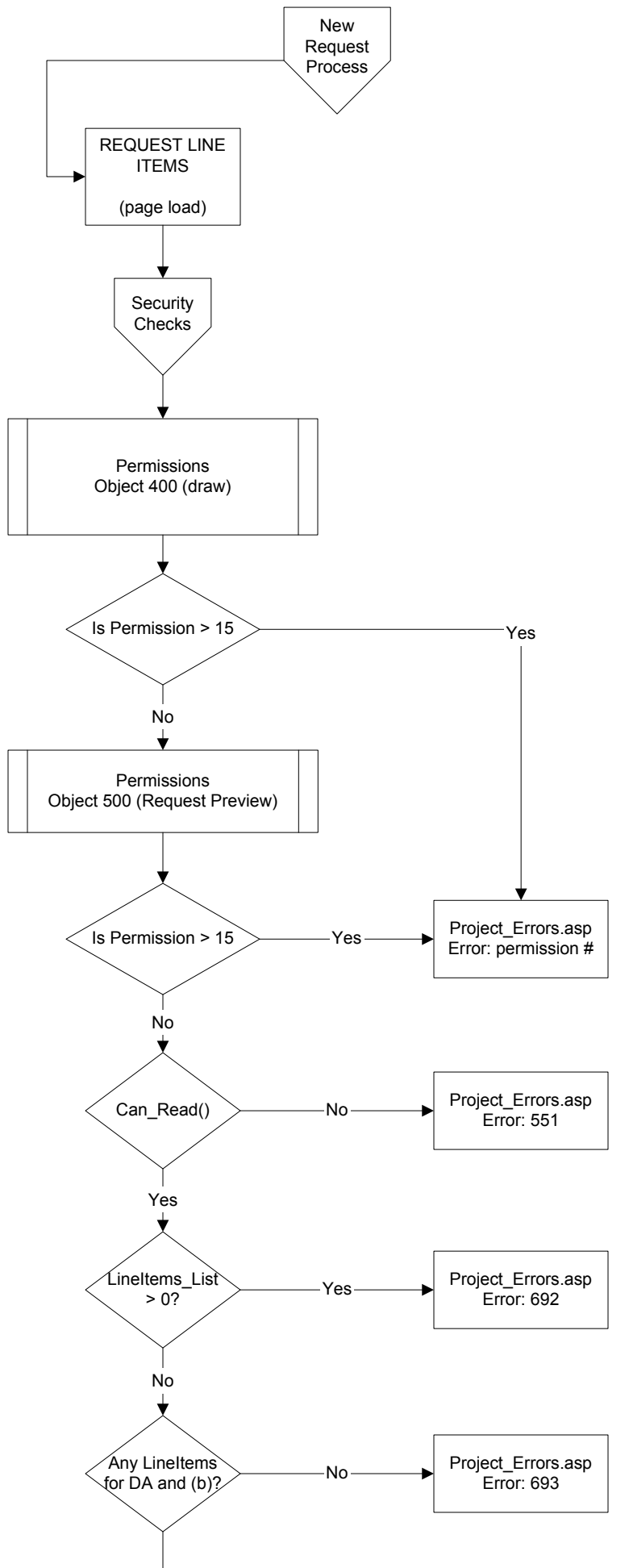
Project_Errors.asp Error: permission value
Shouldn't happen but it's good we test for this since inexperienced developers may not understand binary and break logic (binary 1111 =15 so only four permissions can be tracked)

No

Continue Processing







Cod_Object	Object_Type	Object_Name
1	1	List
2	1	User
3	1	Properties
4	1	Contact
5	1	Security
6	1	Status
7	1	Category_List
8	1	Category
9	1	Category_Name
10	1	Category_Type
11	1	Category Request Approve
12	1	Address Book
13	1	Address Book Contact User
14	1	Address Book Permissions
100	2	
101	2	Project
102	2	List
103	2	Properties
104	2	Status
105	2	Users
106	2	Security
200	3	
201	3	Funds_Users
203	3	Totals
300	4	
301	4	Original Allocation
302	4	Retainage
303	3	Import
400	5	
401	5	List
402	5	Line Items
403	5	Status
404	5	Totals
410	6	Line Items Amount
411	6	Payee
412	6	Package
420	7	
421	7	General Observations
422	7	Quality of Work
423	7	Summary
424	7	Permit Agency Compliance
425	7	Schedule
426	7	Line Item Percent Completed
427	7	Issues
428	7	Approbation
430	8	
500	9	
501	9	Line Items
502	9	Line Items Amount
503	9	Payee
600	10	Contract Adjustment
601	10	CA List
602	10	CA Status
700	11	Reports
701	11	Report A
702	11	Report C
703	11	Report B
704	11	Report D
800	12	
810	12	Suggested
811	12	Suggested Status
812	12	Suggested Waiting Approve
*		

The OBJ_OBJECTS table contains the structure for "vertical" tables. This permits growth without table structure changes. A limitation of this concept is that the Server must work harder to extract required data (scalability issues).

The Object_type (1 - 12) represents the tables supported where:

- 1 = User
- 2 = Project
- 3 = Fund
- 4 = Line Item
- 5 = Draw
- 6 = Draw Request
- 7 = Draw Inspection
- 8 = Draw Disbursement
- 9 = Request Preview
- 10 = Contract Adjustment
- 11 = Reports
- 12 = Master Line Items

So if the **Line item Request (9)** Table were horizontal it would have had the fields

Line Items (501), Line Items Amount (502), and Payee (503)

Objects 501,
502, 503
issue

Proc_Prj_Draw_Req_Prev_save.asp does not use this table properly - it populated 501, 502, and 503 with the same information (user and primary key of PRV_Data).

Failure to use the tables as designed can cause confusion / corruption of data processing.

PROJECTS/Functions_Projects.asp violates basic principles of usage that can cause issues if developer are not aware of them; it may require future development requirements to also violate the rules or unexpected results might occur. For example:

It properly defines om_USR (1) through om_PRJ_DRW (5) however when it gets to om_PRJ_CA (6), om_PRJ_REP (7), and om_MLI (8) the wrong object type reference numbers are used.

om_PRJ_CA is actually supposed to be 10 Not 6
om_PRJ_REP is actually supposed to be 11 Not 7
om_MLI is actually supposed to be 12 Not 8

The developer incorrectly started using the first digit of the range - versus TYPE
6xx is the "Cod_Object" range for Contract Adjustments
7xx is the "Cod_Object" range for Reports
8xx is the "Cod_Object" range for Master Line Items

OBJ_TYPES table

Cod_Type	Object_Type
1	User
2	Project
3	Fund
4	LineItem
5	Draw
6	Draw Request
7	Draw Inspection
8	Draw Disbursement
9	Request Preview
10	Contract Adjustment
11	Reports
12	Master Line Items

```

shared/Functions_Server.asp
10 'object modules
11 const om_USR = 1
12 const om_PRJ = 2
13 const om_PRJ_FMD = 3
14 const om_PRJ_LIT = 4
15 const om_PRJ_DRW = 5
16 const om_PRJ_CA = 6
17 const om_PRJ_REP = 7
18 const om_MLI = 8

```

